

# Oakland Harbor Turning Basins Widening

## Views Characterizing the Project Area



May 2024





Figure 1: Key Observation Points and Parks, Outer Harbor Turning Basin Study Area



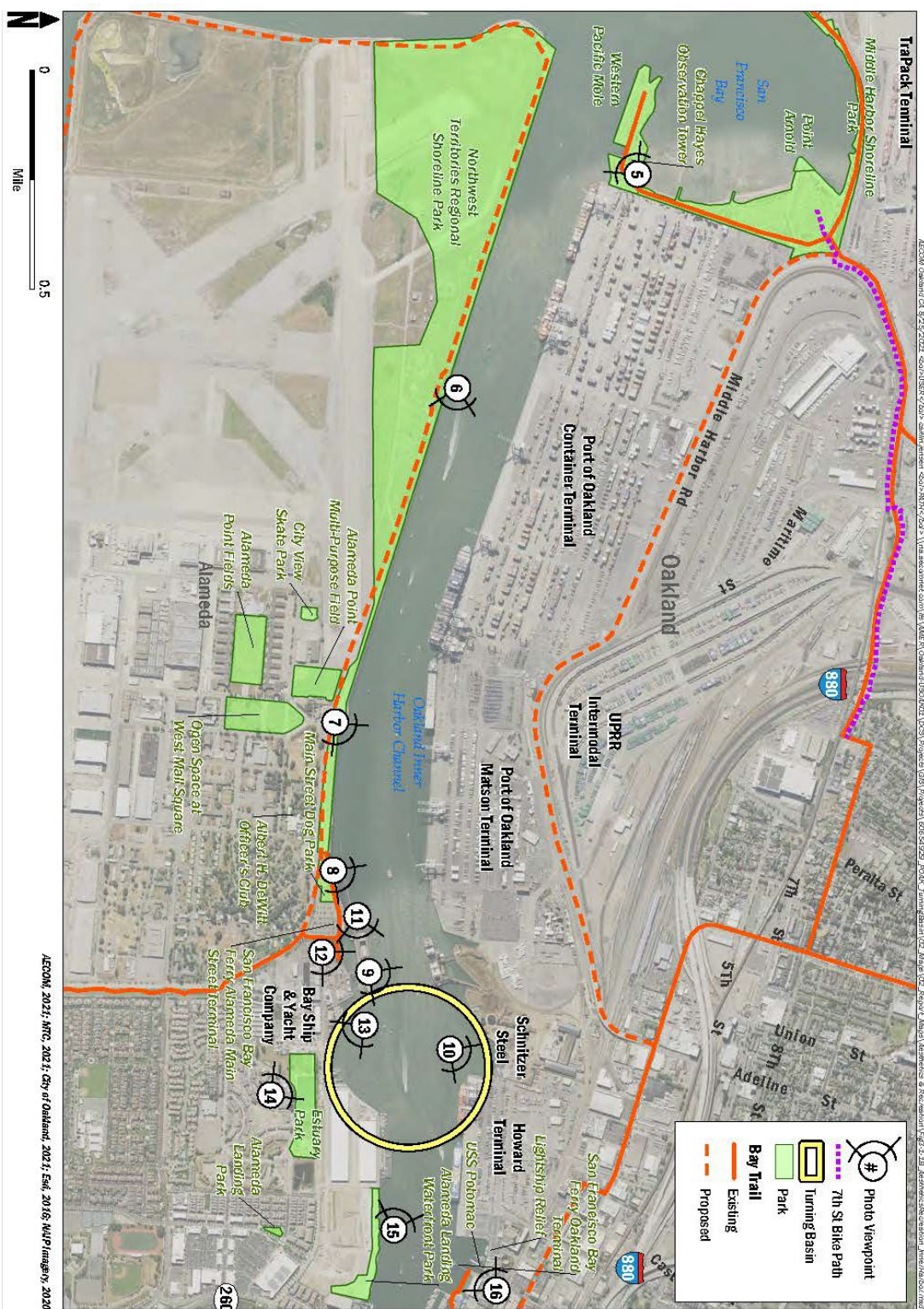


Figure 2: Key Observation Points and Parks, Inner Harbor Turning Basin Study Area



**Figure 11: Viewpoint 1**

View of the Outer Harbor Turning Basin and Port Marine Terminals from the Bay Bridge and Bay Bridge Trail, looking east.

Source: Google Earth 2021



**Figure 12: Viewpoint 2**

View of the Outer Harbor Turning Basin and Port Marine Terminals from the Judge John Sutter Shoreline Park (Gateway Park) entrance, looking south.

Source: Google Earth 2021

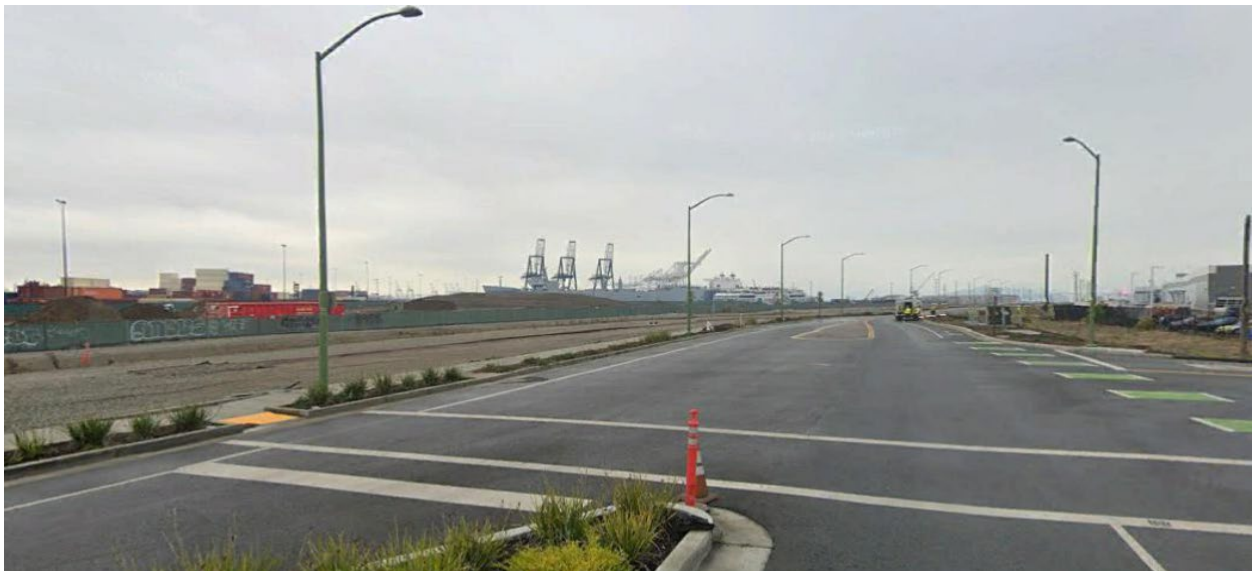




**Figure 13: Viewpoint 3**

View of tugboats at Berths 8/9, Government Lay berth Vessel at Berths 9 and 20, and the Outer Harbor and Marine Terminals from the Judge John Sutter Shoreline Park Bridge Yard Building and Observation Deck at Burma Road, looking east.

Source: Google Earth 2021



**Figure 14: Viewpoint 4**

View of shipping containers, soil stockpiles, and the Outer Harbor Marine Terminals from the Bay Trail/Burma Road, looking south.

Source: Google Earth 2021



**Figure 15: Viewpoint 5**

View of the Inner Harbor Entrance, San Francisco Skyline, and Chappell Hayes Observation Tower, from Middle Harbor Shoreline Park, looking southwest.

Source: Google Earth 2021



**Figure 16: Viewpoint 6**

View of Inner Harbor Channel and the planned Northwest Territories Regional Shoreline Park, from the Inner Harbor Channel, looking east.

Source: Google Earth 2014



### **Viewpoint 7**

View of waterfront area and Port Matson Terminal Near City of Alameda Point Multi-Purpose Field and Open Space at West Mall Square, with IHTB in the middleground and San Leandro Hills in the background, from Main Street and West Mall Square, looking east.

Source: Google Earth 2021



### **Viewpoint 8**

View of black, mechanized crane at Schnitzer Steel, northwestern edge of IHTB, City of Oakland Skyline, San Leandro Hills, ship construction building and cranes at Bay Ship & Yacht Company, Alameda Ferry Terminal, Main Street Dog Park, and Bay Trail, from the Bay Trail, looking northeast.

Source: Google Earth 2021





**Figure 17: Viewpoint 9**

View of Schnitzer Steel Facility with black mechanized crane, northwestern corner of Inner Harbor Turning Basin from the Inner Harbor Channel, looking north.

Source: Google Earth 2014



**Figure 18: Viewpoint 10**

View of northeastern Inner Harbor Turning Basin, Howard Terminal from the Inner Harbor Channel, looking northeast.

Source: Google Earth 2014





### **Viewpoint 11**

View of Bay Ship & Yacht Company at southwestern corner of IHTB, and Bay Trail, from the San Francisco Bay Alameda Ferry Terminal, looking east.

Source: Google Earth 2021



### **Viewpoint 12**

View of eastern end of Bay Trail and Bay Ship & Yacht Company adjacent to southwestern side of IHTB, from the Bay Trail, looking east.

Source: Google Earth 2016



### **Viewpoint 13**

View of southeastern side of IHTB including warehouses and ships at Marine Express Services and trees in City of Alameda's Estuary Park, from the Inner Harbor Channel, looking southeast.

Source: Google Earth 2021



### **Viewpoint 14**

View of playing fields and high-mast lighting at City of Alameda Estuary Park, cranes at the Bay Ship & Yacht Company, and warehouses at Marine Express Services, from Mosley Avenue, looking north.

Source: Google Earth 2019





### **Viewpoint 15**

View of Inner Harbor Channel, cranes at Howard Terminal, northern portion of IHTB, cranes at Matson Terminal and the San Francisco skyline, from Inner Harbor at the planned Alameda Landing Waterfront Park, looking west.

Source: Google Earth 2021



### **Figure 19: Viewpoint 16**

View of the southern side of the Inner Harbor Turning Basin from the Public Plaza at the San Francisco Bay Oakland Ferry Terminal and Historic Ship Dock, looking southwest.

Source: Google Earth 2019